

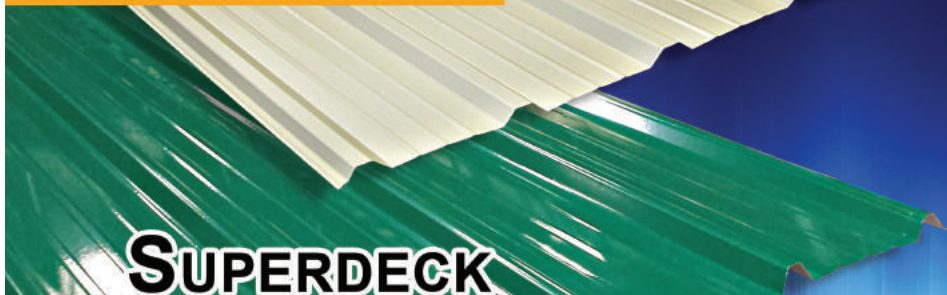


# JACINTO COLOR STEEL, INC.

**NOBODY KNOWS ROOFING BETTER THAN JACINTO**



**TRIWAVE**



**SUPERDECK**



**CURVED RIB**



**STILE**



**RJ DUAL RIB-980**



**SPANDREL**



**STANGOR**

PROFILE	AVAILABLE THICKNESS	TEMPER	YIELD STRENGTH (ksi)	NOMINAL WIDTH (mm)	EFFECTIVE WIDTH (mm)	APPLICATION
ORDINARY CORRUGATION	0.4-0.5-0.6	Soft / Hard	40/80	813	635 At 2 ½ lap	Roofing / Siding
STANCOR	0.4-0.5-0.6	Soft / Hard	40/80	1100	940 At 2 ½ lap	Roofing / Siding
TRIWAVE	0.4-0.5-0.6	Soft / Hard	40/80	826	760	Roofing / Siding
SUPERDECK	0.4-0.5-0.6	Soft / Hard	40/80	1070	1040	Roofing / Siding
STILE	0.4-0.5-0.6	Soft	40	1100	1000	Roofing
RJ DUAL RIB	0.4-0.5-0.6	Soft / Hard	40/80	1072	980	Roofing / Siding

In roofing, the name JACINTOCOLOR comes out on top. Because, for over five decades, we have been known to provide roofing that will stand firm, rain or shine, year in and year out.

Architecturally moulded ribs and configurations maximize structural strength and lend elegant graphic treatment to its various residential, industrial and commercial applications. Because of product innovation, roofing profiles are very economical and costs won't go through the roof, figuratively.

Never compromising on product excellence, JACINTOCOLOR ROOFING goes over the top to provide people with quality shelter and exceptional service.

*Jacinto uses only prime imported and local pre-painted galvalume/galvanized material, roll-formed into tried and tested roofing designs.*



**JACINTOCOLOR STEEL, INC.**  
**NOBODY KNOWS ROOFING BETTER THAN JACINTO**

Jacinto Compound, Km. 21 Quirino Hi-way, Novaliches, Quezon City  
 Telefax: 930-1872 / 937-5867

Urdaneta City Sales Office:  
 Unit 2 Cristina Bldg., San Vicente, Urdaneta City, Pangasinan  
 Tel. No. (075) 656-0277

 [www.jacintocolor.com](http://www.jacintocolor.com)  [facebook.com/jacintocolorsteel](https://facebook.com/jacintocolorsteel)

e-mail: [admin@jacintocolor.com](mailto:admin@jacintocolor.com)

HOTLINE: 219-8484

MOBILE: +63 9178751867



**JACINTO**COLOR  
TRIWAVE

# TRIWAVE

**"SO EYE-CATCHING, IT'S A SPECTACLE TO BEHOLD".**

Over the years, the Triwave profile has been tried and tested in terms of structural and aesthetic appeal. It is both easy to install and hassle-free to maintain, and is favorable for use in all types of structures.

## GENERAL MATERIAL SPECIFICATIONS

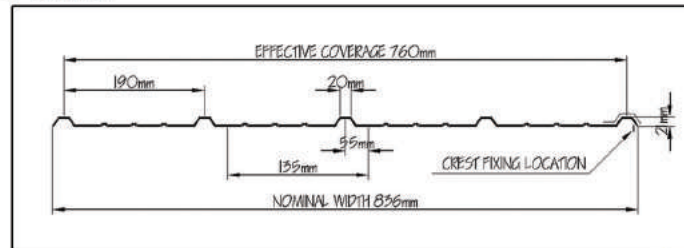
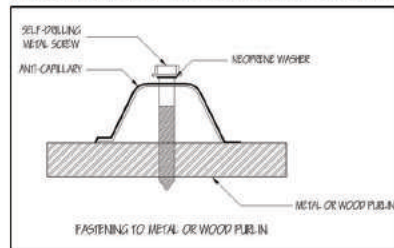
### REFERENCE STANDARD

JIS G3322 CGLCC-20 AND PNS 67:2009

Paint Coating	: Polyester Base
Top Coat	: 18 to 23 microns
Primer Coat	: 5 to 7 microns epoxy base (at top side only)
Back Coat	: 5 to 7 microns service coating
Available Thickness	: 0.400mm/0.500mm/0.600mm
Nominal Width	: 826mm
Effective Coverage	: 760mm
Available Colors	: Red, Green, Blue, Ivory, Brown, Terracota, White
Application	: Roofing and Siding

TOTAL ALLOWABLE LOADS IN LB./SQ. FT. FOR ANNEALED				
PURLIN SPACING	2'4"	3'6"	4'0"	4'6"
: Due to stress	189	84	64	51
Gauge 0.60mm : Due to L/360 Deflection	99	29	20	14
: Due to L/240 Deflection	149	44	29	21
: Due to stress	157	70	53	42
Gauge 0.50mm : Due to L/360 Deflection	83	24	16	12
: Due to L/240 Deflection	124	37	24	17
: Due to stress	125	56	42	34
Gauge 0.40mm : Due to L/360 Deflection	66	20	13	9
: Due to L/240 Deflection	99	29	20	14
TOTAL ALLOWABLE LOADS IN LB./SQ. FT. FOR HARD STEEL				
: Due to stress	275	122	93	74
Gauge 0.40mm : Due to L/360 Deflection	177	53	35	25
: Due to L/240 Deflection	266	79	79	37

## FASTENING TO METAL OR WOOD PURLIN



STRUCTURAL PROPERTIES			
Thickness (in./mm)	0.0236/0.60	0.0197/0.50	0.0157/0.40
Area (in <sup>2</sup> )	0.85	0.709	0.567
Moment of Inertia (in. <sup>4</sup> )	0.052	0.403	0.035
Section S top (in. <sup>3</sup> )	0.137	0.115	0.093
Modulus S bottom (in. <sup>3</sup> )	0.145	0.121	0.198
	225	192	155
Y top (in.)	0.376	0.374	0.373
Y bottom (in.)	0.356	0.354	0.352

**JACINTOCOLOR**  
**TRIWAVE**

WOOD PURLINS	WITH INSULATION
12x65mm	12x65mm

STEEL PURLINS	WITH INSULATION
12x45mm	12x55mm

## LOCATION OF FASTENERS

### FOR ROOF:

TRIWAVE is fastened to supports through the crest of the corrugations

At the end supports, the fasteners are located at every crest starting from the female side overlap: every third crest at intermediate support.

Lap fasteners are recommended to hold side laps firmly together and maintain a complete leakproof system. Lap fasteners are located on the crest of the corrugation at mid span between purlins.

### FOR SIDING AND WALLING:

TRIWAVE can be fastened through the crest or the valley of the corrugations.

## INSTALLATION DETAILS

Laying should start from the end opposite the side where the prevailing monsoon wind is coming from lay and install the first panel with the female rib of the next panel on the male rib of the previous panel.

Except when using self drilling fasteners, holes should be drilled for screws and nails. Do not make holes with blunt punch. Walk only along purlin locations along side laps or on wooden planks laid on the roof panels when crossing the roof area.

## HANDLING AND STORAGE

When lifting and unloading sheets by crane, bundles should be slung from lifting booms and bars to spread the load. Where suitable lifting equipment is not available at the time of delivery, panels should be handled carefully to preserve the quality of the product.

Panels should not be slid over rough surfaces or over each other.

Sheets should be kept drying during storage and clear off the ground to provide adequate ventilation.

## PRODUCT IMPROVEMENT

We reserve the right to improve the design and specification without notice due to the company's commitment to product improvement and innovation.

**JACINTOCOLOR STEEL, INC.**  
NOBODY KNOWS ROOFING BETTER THAN JACINTO

Jacinto Compound, Km. 21 Quirino Hi-way, Novaliches, Quezon City  
Telefax: 930-1872 / Tel. Nos.: 937-5867 / Bayantel No.: 386-1847  
HOTLINE No.: 219-8484 MOBILE No.: +63 9178751867

e-mail: [admin@jacintocolor.com](mailto:admin@jacintocolor.com)

URDANETA BRANCH: Telefax: (075) 656-0277

[www.jacintocolor.com](http://www.jacintocolor.com)

[facebook.com/jacintocolorsteel](https://facebook.com/jacintocolorsteel)

**JACINTO**COLOR  
**SUPERDECK**

# SUPERDECK

**"SO LEAKPROOF IT WILL KEEP THINGS REALLY DRY"**

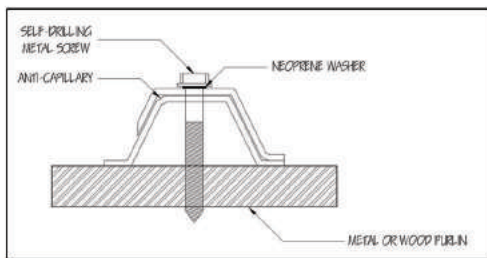
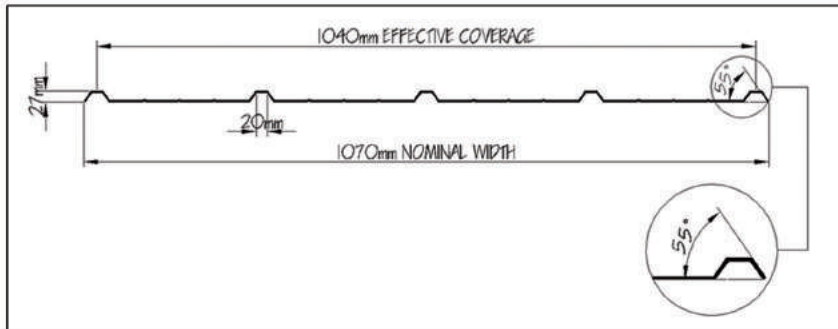
Known for its durability and aesthetic value, the Superdeck profile is widely used in residential, commercial, and industrial structures. Its design specifications give emphasis on looks while maintaining the natural strength of a rib type profile.



## GENERAL MATERIAL SPECIFICATIONS

### REFERENCE STANDARD JIS G3322 CGLCC-20 AND PNS 67:2009

Available Thickness	: 0.40mm/0.50mm/0.60mm
Nominal Width	: 1070mm
Effective Coverage	: 1040mm
Available Length	: Any transportable length
Available Thickness	: 0.400mm/0.500mm/0.600mm
Rainfall Capacity	: 500mm/hr
Application	: Roofing and Siding
Available Colors	: Red, Green, Blue, Ivory, Brown, Terracota



### FASTENING TO METAL OR WOOD PURLINS

WOOD PURLINS	WITH INSULATION
12x65mm	12x65mm
STEEL PURLINS	WITH INSULATION
12x55mm	12x55mm

## LOCATION OF FASTENERS

FOR ROOF:

SUPER DECK PROFILE is fastened through the crest of the corrugations

At the end supports, the fasteners are located at every crest starting from the female side overlap: every crest at intermediate support.

Lap fasteners are recommended to hold side laps firmly together and maintain a complete leakproof system. Lap fasteners are located on the crest of the corrugation at mild span between purlins.

FOR SIDING AND WALLING:

SUPER DECK PROFILE can be fastened through the crest or the valley of the corrugations.

## SLOPE

The recommended pitch for SUPER DECK is 10 degrees minimum.

When installing SUPER DECK as a roof at below 15 degrees pitch, it is highly recommended that the ridge be turned up using any turn-up tool (a slip joint plier or adjustment can be used). This is best done before fixing the sheets in place.

## HANDLING AND STORAGE

SUPER DECK should be handled carefully to preserve the quality of the product.

Panels should not be slid over rough surfaces or over each other. Sheets should be kept dry during storage.

### ALLOWABLE LOADS FOR CONTINUOUS SPAN

SPAN BETWEEN SUPPORTS	FT.	2.4	3.0	3.5	4.0
SAFE DISTRIBUTED LOAD	LB/ SQ.FT.	2859	1712	1258	963
DEFLECTION UNDER LOAD	INCH	0.16	0.27	0.37	0.48
LOAD FOR L/ 180	LB/ SQ FT	2720	1274	802	538
LOAD FOR L/ 240	LB/ SQ FT	2040	956	6026	403
LOAD FOR L/ 360	LB/ SQ FT	1360	637	401	269

# JACINTO COLOR

## SUPERDECK

**JACINTO COLOR STEEL, INC.**  
NOBODY KNOWS ROOFING BETTER THAN JACINTO

Jacinto Compound, Km. 21 Quirino Hi-way, Novaliches, Quezon City  
Telefax: 930-1872 / Tel. Nos.: 937-5867 / Bayantel No.: 386-1847  
HOTLINE No.: 219-8484 MOBILE No.: +63 9178751867

e-mail: [admin@jacintocolor.com](mailto:admin@jacintocolor.com)  
URDANETA BRANCH: Telefax: (075) 656-0277

[www.jacintocolor.com](http://www.jacintocolor.com)

[facebook.com/jacintocolorsteel](https://facebook.com/jacintocolorsteel)

**JACINTO**COLOR  
CURVED RIB



# CURVED RIB

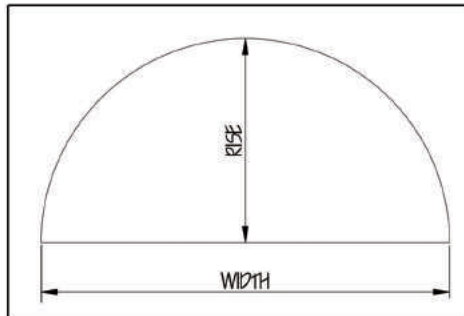
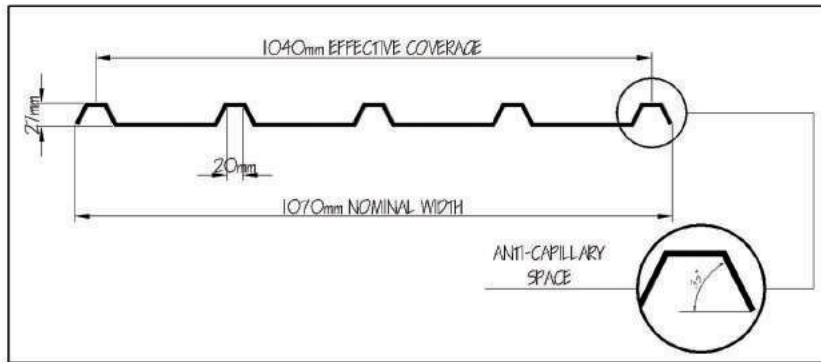
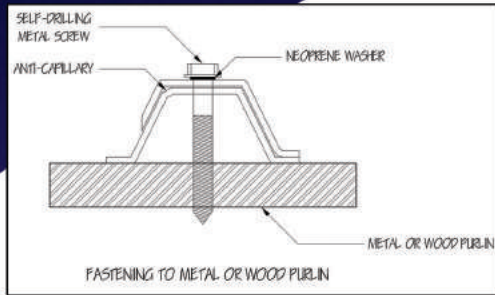
"SO MANY POSSIBILITIES IT WILL CHANGE THE IMAGINATION"



## FEATURES:

- NEW CRIMP DESIGN
- 100% LEAKPROOF
- STIFFENERS FOR STRENGTH & STYLE

Often used in gymnasiums or warehouses, the curved profile has a lighter structural steel requirement that saves up to 35% in steel components because of its increased distance requirement between truss members and purlins. This profile is also structurally stronger as an effect of its configuration, and is less prone to water penetration and leakage.

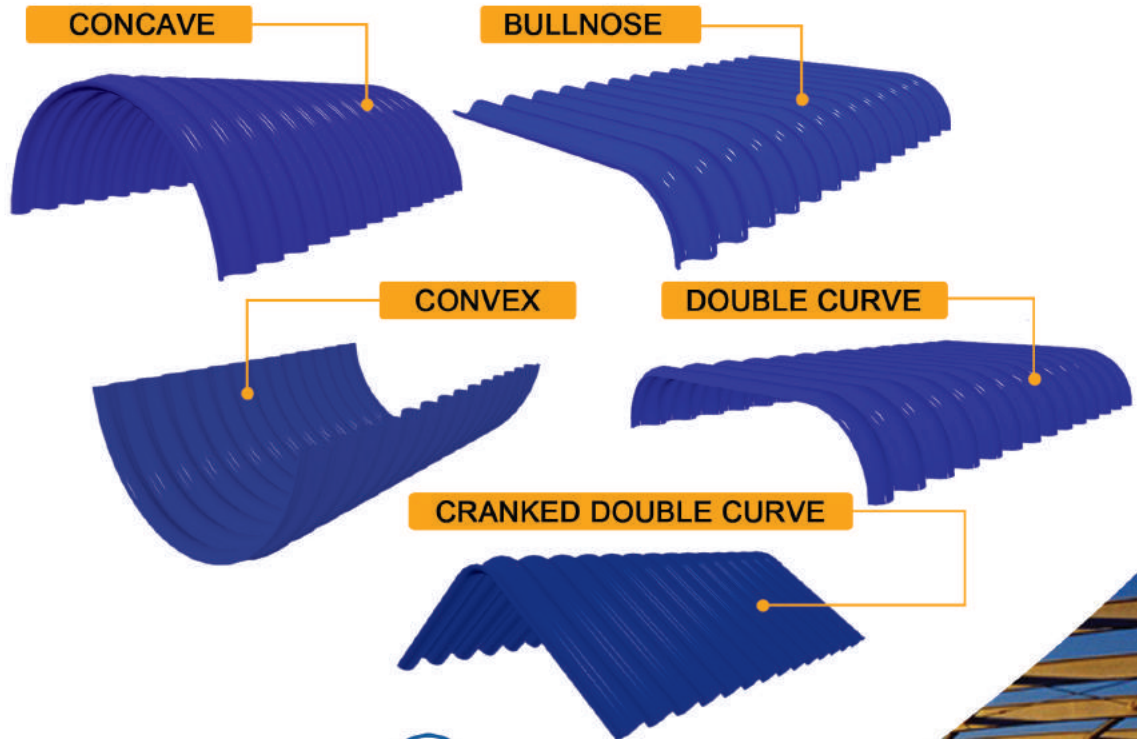


NOTE: THE LENGTH AND CURVATURE OF THE PANEL IS DETERMINED BY THE RISE AND WIDTH

**JACINTOCOLOR**  
**CURVED RIB**

### GENERAL PRODUCT INFORMATION

Product	:	JIS G3322 CGLCC
Available Thickness	:	0.400mm / 0.500mm / 0.600mm
Nominal Width	:	1070mm
Effective Coverage	:	1040mm
Available Length	:	Any Transportable Length
Application	:	Roofing
Available Colors	:	Red, Green, Ivory, Blue Brown, Terracotta, White



**JACINTOCOLOR STEEL, INC.**  
NOBODY KNOWS ROOFING BETTER THAN JACINTO

Jacinto Compound, Km. 21 Quirino Hi-way, Novaliches, Quezon City  
 Telefax: 930-1872 / Tel. Nos.: 937-5867 / Bayantel No.: 386-1847  
 HOTLINE No.: 210-8484 MOBILE No.: +63 9178751867  
 e-mail: admin@jacintocolor.com  
 URDANETA BRANCH: Telefax: (075) 656-0277

www.jacintocolor.com

facebook.com/jacintocolorsteel





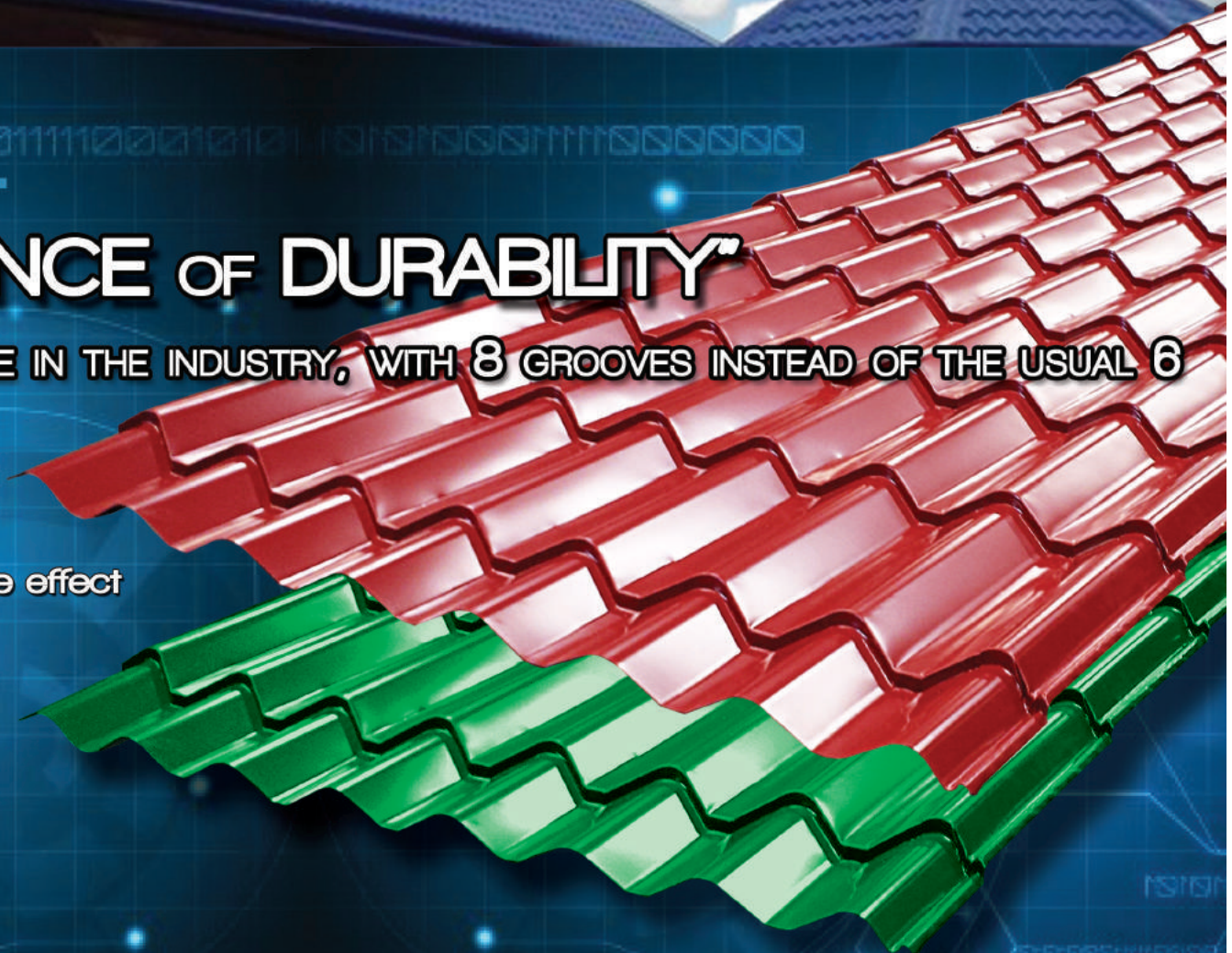
**JACINTOCOLOR**  
**STILE**

# STILE

**"THE ELEGANCE OF DURABILITY"**

**STRONGEST TILE-EFFECT PROFILE IN THE INDUSTRY, WITH 8 GROOVES INSTEAD OF THE USUAL 6**

- Simulates the classic Hispanic tile effect
- Exceptionally durable and stylish
- No. 1 consumer choice



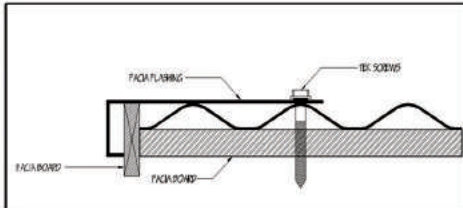
## GENERAL MATERIAL SPECIFICATIONS

Available Thickness :	0.40mm, 0.50mm, 0.60mm
Length :	Any transportable length
Anti-Rust Coat :	55% alu-zinc coating
Paint Top Coat :	18-20 microns regular polyester with epoxy primer
Back Coat :	5-8microns
Available Color :	Red, Green, Ivory, Blue, Brown & Terracotta
Application :	Roofing

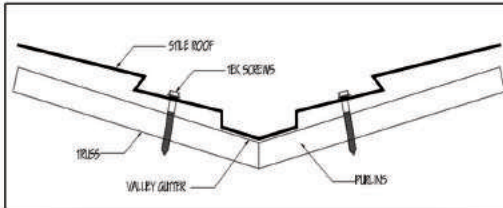
## STRUCTURAL ANALYSIS OF JACINTO COLORS STILE ROOF

STRUCTURAL PROPERTIES						
Thickness	Area	Moment of Inertia	Section Modulus S Top S Bottom	Resisting Moment	Y Top	Y Bottom
(in.)	(in. <sup>4</sup> )	(in. <sup>5</sup> )	(in. <sup>5</sup> )	(ft.-lb.)	(in.)	(in.)
(mm.)	(mm. <sup>4</sup> )	(mm. <sup>5</sup> )	(mm. <sup>5</sup> )	(N-m)	(mm)	(mm)
0.0157	0.539	0.095	0.176	246	0.54	0.642
0.4			0.148			

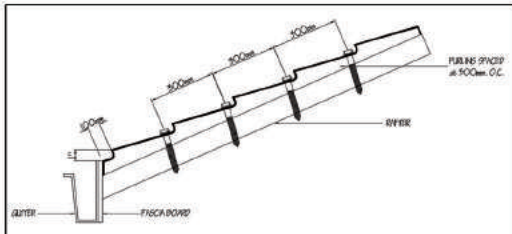
### FASCIA FLASHING SECTION



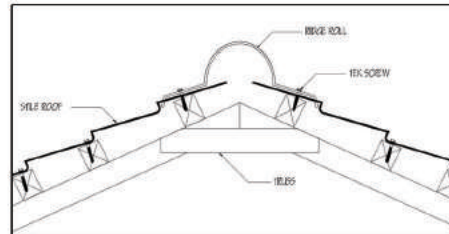
### VALLEY GUTTER SECTION



### PURLIN SPACING & FASTENING LOCATIONS

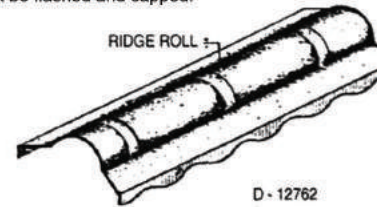


### RIDGE TOP SECTION

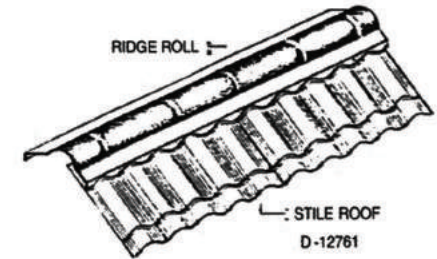


## RIDGE AND HIP CAPPING

Roofing along hip and valley lines are similar by selecting the intended roofings. Chalkline is drawn on the sheet along the line of the hip and or the valley then, the overhanging parts of the panels are cut-off using a tinsnip or nibbler. These are then fixed as described in the installation procedure. The hip line must be flashed and capped.

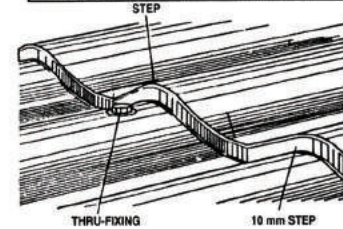


The hip and capping is supplied in 1.22 meter lengths.

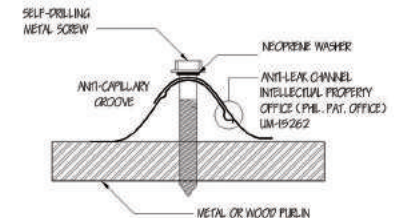


## RECOMMENDED INSTALLATION FASTENERS

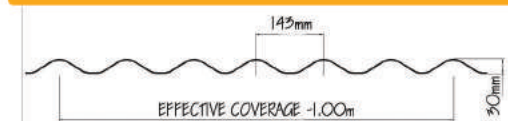
WOOD PURLINS 12 X 65 mm	WITH INSULATIONS 12 X 65 mm
STEEL PURLINS 12 X 45 mm	WITH INSULATIONS 12 X 55 mm



## SHEET FIXING AT VALLEY



## EFFECTIVE WIDTH

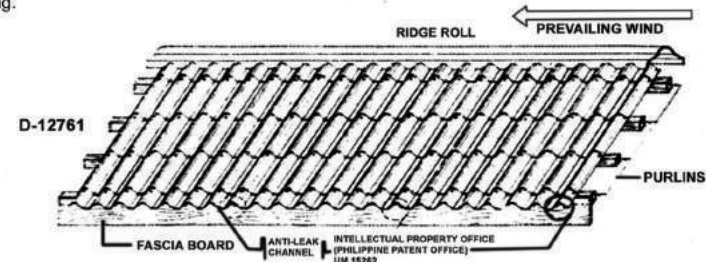


## INSTALLATION DETAILS

Panels are laid in one direction, usually direction of the prevailing wind with the side laps facing away from the wind.

The panels are laid side-by-side with one panel on top of the other to ensure that the leak system is situated as shown.

The panels are laid with the help of a stringline running parallel to the fascia board, the edges of the panels merely touching the string to ensure straightness. Unlike other step profiles, Stile Roof does not need skewing since the profile is self correcting.



**JACINTOCOLOR**  
STILE

**JACINTOCOLOR STEEL, INC.**  
NOBODY KNOWS ROOFING BETTER THAN JACINTO

Jacinto Compound, Km. 21 Quirino Hi-way, Novaliches, Quezon City  
Telefax: 930-1872 / Tel. Nos.: 937-5867 / Bayantel No.: 386-1847  
HOTLINE No.: 219-8484 MOBILE No.: +63 9178751867

e-mail: [admin@jacintocolor.com](mailto:admin@jacintocolor.com)

URDANETA BRANCH: Telefax: (075) 656-0277

[www.jacintocolor.com](http://www.jacintocolor.com)

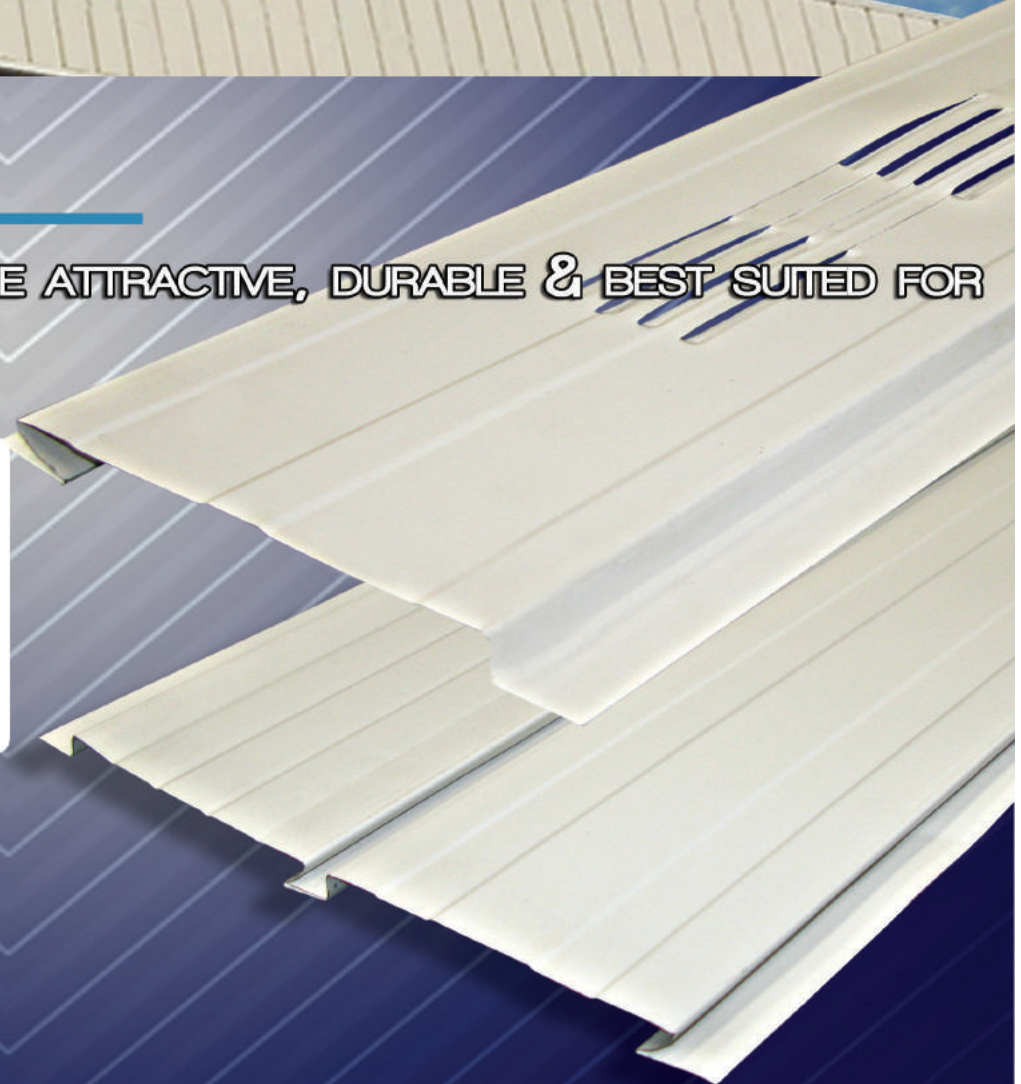
[facebook.com/jacintocolorsteel](https://facebook.com/jacintocolorsteel)



**JACINTOCOLOR**  
SPANDREL

# SPANDREL

JACINTO QUALITY MAKES SPANDRELS MORE ATTRACTIVE, DURABLE & BEST SUITED FOR VARIOUS APPLICATIONS...



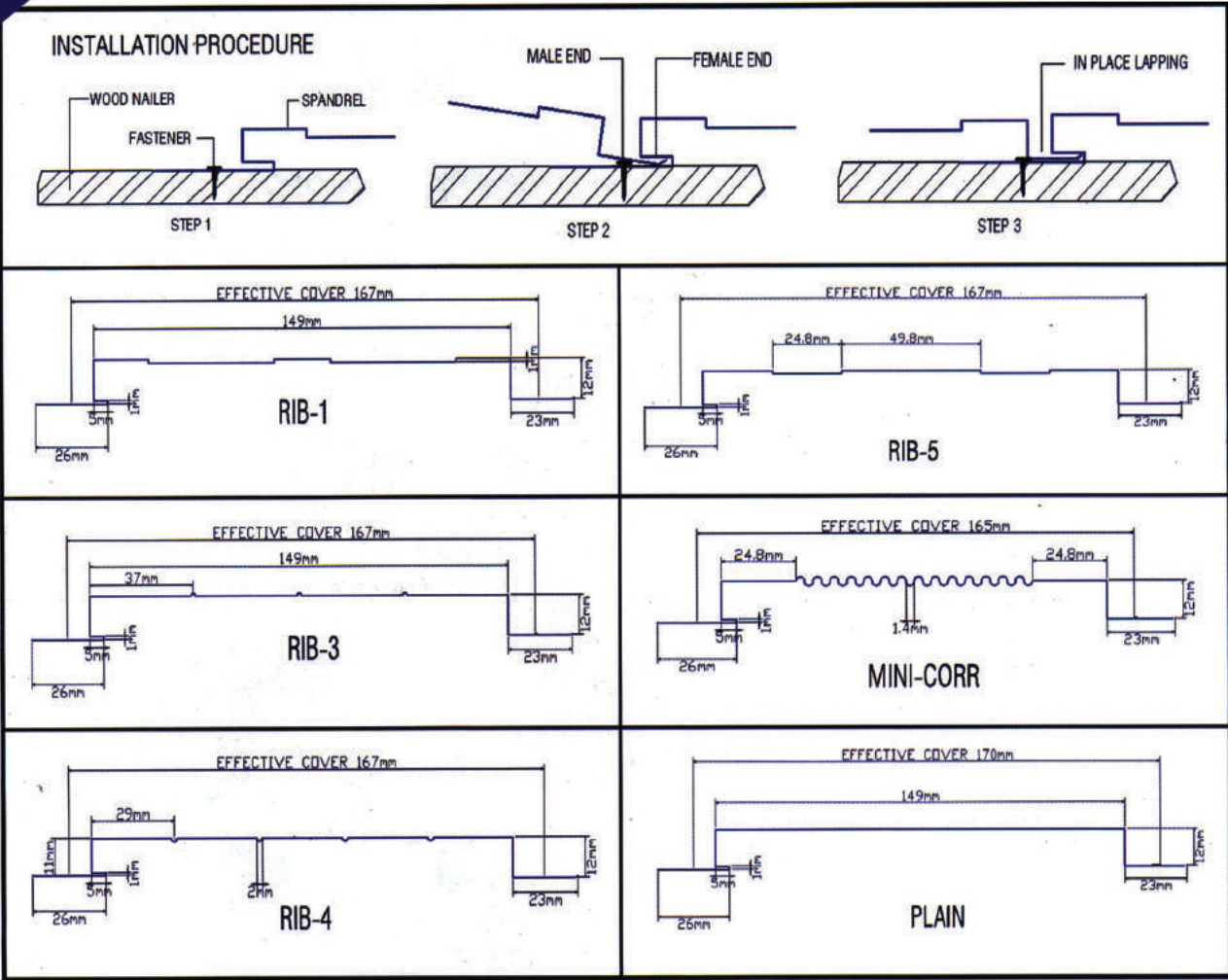
**GENERAL MATERIAL SPECIFICATIONS**

The perfect innovation for paneling, sidings, wallings, and ceilings for residential, commercial, and industrial buildings.

Continuous lines, various configurations and architecturally molded ribs give not only strength, but elegance and beauty to match any building's design.

Available in 6 brilliant spandrel designs which are either plain, rib type, or mini corrugated type.

- Available Thickness : 0.40mm / 0.500mm / 0.600mm
- Length : Any transportable length
- Anti-Rust Coat : Galvanized or alu-zinc coating
- Paint Top Coat : 18-20 microns regular polyester with epoxy primer
- Back Coat : 5/8 microns
- Available Color : Red, Green, Ivory, Blue, Brown, Terracotta & White



Jacinto Compound, Km. 21 Quirino Hi-way, Novaliches, Quezon City  
 Telefax: 930-1872 / Tel. Nos.: 937-5867 / Bayantel No.: 386-1847  
 HOTLINE No.: 219-8484 MOBILE No.: +63 9178751867  
 e-mail: admin@jacintocolor.com  
 URDANETA BRANCH: Telefax: (075) 656-0277



**JACINTO**COLOR  
STANCOR

# STANCOR

**"SO ENDURING IT'LL OUTLAST ANY SEASON"**

This conventional profile has been used extensively over the past few decades due to its classic design and flawless functionality. Sturdy, hassle-free to maintain, and easy on the eyes, Stancor gets the job done.

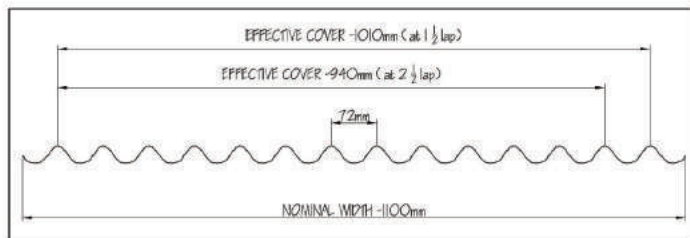
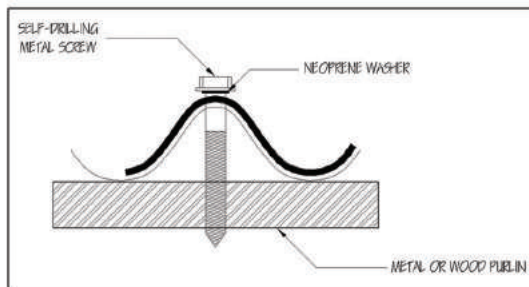
### GENERAL MATERIAL SPECIFICATIONS

#### REFERENCE STANDARD

JIGS G3322 CGLCC-20 AND PINS 67: 2009

Paint Coating	:	(Polyester Base)
Top Coat	:	18 to 23 microns
Primer Coat	:	5 to 7 microns epoxy base (at topside only)
Back Coat	:	5 to 7 microns service coating
Available Thickness	:	0.400mm/0.500mm/0.600mm
Nominal Width	:	1100mm
Effective Coverage	:	1010mm at 1-1/2 lap 940mm at 2-1/2 lap
Available Length	:	Any transportable length
Application	:	Roofing and Siding
Available Color	:	Red, Green, Ivory. Blue. Brown, Terracotta, White

### FASTENING TO METAL OR WOOD PURLIN



### SLOPE

The recommended slope for STANCOR is 10 degrees minimum at 2-1/2 rib lap.

When installing STANCOR as a roof at below 15 degrees slope, it is highly recommended that the ridge is to be turned up using any turn-up tool (a slip joint plier or adjustable wrench can be used). This is best done before fixing the sheets in place.

### INSTALLATION DETAILS

Laying should start from the end opposite the side where the prevailing monsoon wind is coming from. Lay and install the first panel with the female rib of the next panel on the male rib of the previous panel.

Except when using self drilling fasteners, holes should be drilled for screws and nails. Do not make holes with blunt punch. Walk only along purlin locations, along side laps or in wooden planks laid on the roof panels when crossing the roof area.

### HANDLING AND STORAGE

STANCOR should be handled carefully to preserve the quality of the product. Panels should not be slid over rough surfaces or over each other. Packs should be kept dry during storage.

### PRODUCT IMPROVEMENT

We reserve the right to improve the design and specification without notice to the company's commitment to product improvement and innovation.

### RECOMMENDED INSTALLATION FASTENERS

GAUGE	WEIGHT PER UNIT	
	kg/ m <sup>2</sup>	kg/ m <sup>3</sup>
0.400mm	1.220mm	1.200mm
	3.40	4.15

WOOD PURLINS	WITH INSULATION
12x50mm	12x65mm
STEEL PURLINS	WITH INSULATION
12x45mm	12x55mm



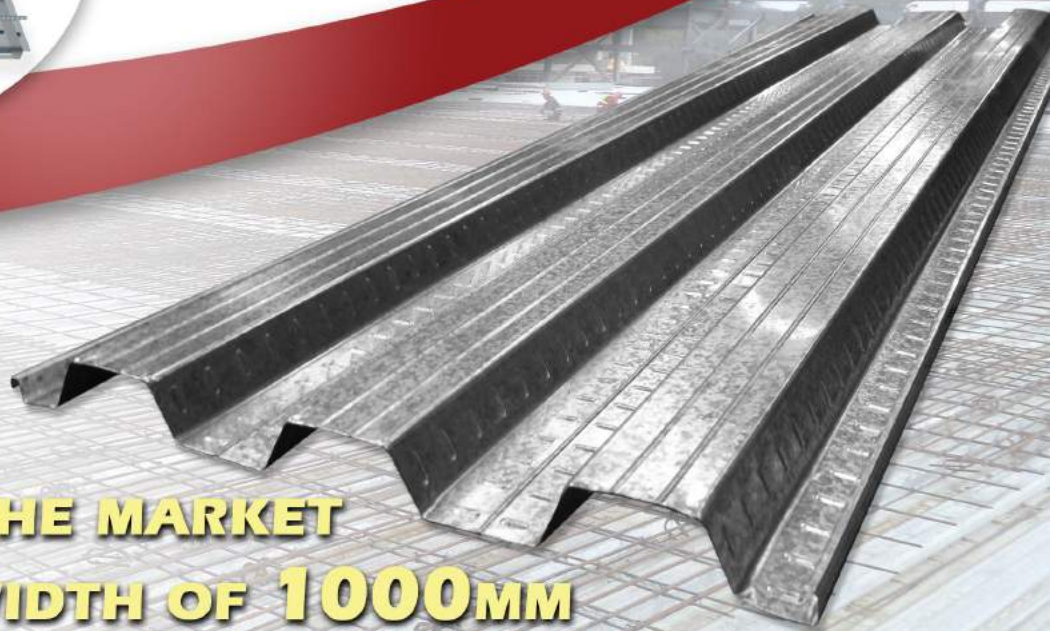
Jacinto Compound, Km. 21 Quirino Hi-way, Novaliches, Quezon City  
 Telefax 930-1872 / Tel. Nos.: 937-5867 / Bayantel No.: 386-1847  
 HOTLINE No.: 219-8484 MOBILE No.: +63 9178751867

e-mail: [admin@jacintocolor.com](mailto:admin@jacintocolor.com)

URDANETA BRANCH: Telefax: (075) 656-0277

# TURFDECK

1 0 0 0



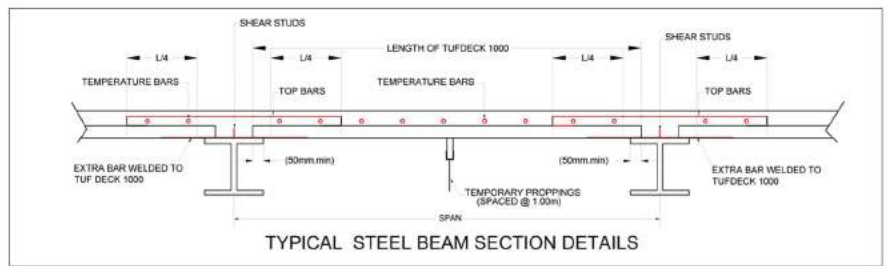
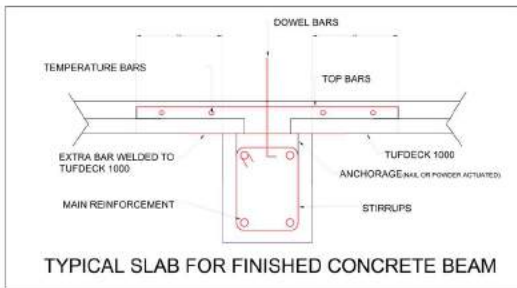
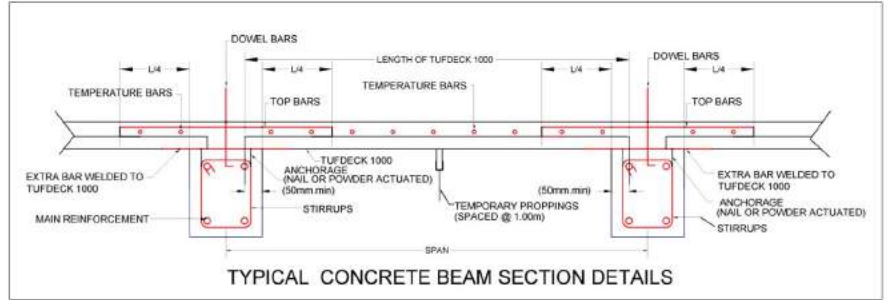
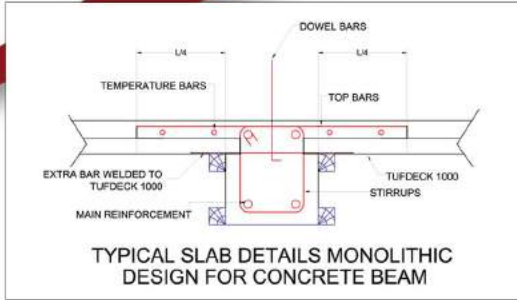
- **TOUGHEST PROFILE IN THE MARKET**
- **EFFECTIVE WIDTH OF 1000MM**

# TUFDECK 1000

JacintoColor Steel Inc., pioneers in the Philippine steel industry for over 55 years, introduces the new TufDeck 1000, a state of the art Steel Decking profile which is structurally designed to serve the needs of our country's booming construction industry.

TufDeck 1000 is made from zinc-coated high tensile steel that delivers excellent durability and superior corrosion resistance. Our Steel Deck serves as a bottom bar reinforcement to form a composite slab and can be used in both concrete and steel frame building structures. Designed and conceptualized using Jacinto's extensive industry experience, the TufDeck 1000 has no equal in terms of strength and durability.

The TufDeck 1000 serves as a permanent form work which reduces the need for temporary formwork, propping, or shoring during the construction period. In effect, this reduces construction costs and saves on time. Once installed, it may also serve as a safe working platform for the execution of other trades during the construction phase.

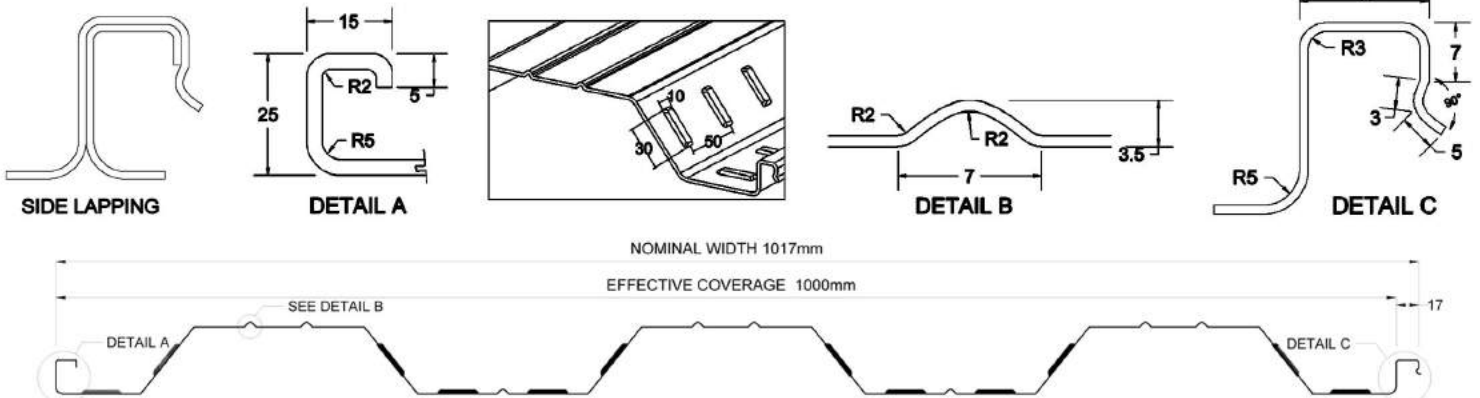


### FEATURES OF TUFDECK 1000:

- Uses High Tensile Steel
- High Corrosion Resistant Coating
- Structurally Designed for Maximum Strength and Durability
- Possesses Positive Interlocking Design
- Easily Installed

### BENEFITS OF TUFDECK 1000:

- Unparalleled Strength and Durability due to design
- Can be used both in concrete and steel frame structures
- Cost saving and quickly installed
- Design contains unique "embossments" for excellent bonding of steel and concrete



### GENERAL PRODUCT INFORMATION:

Base Metal	: Cold Rolled Steel
Specification	: ASTM A653/A653M
Available Thickness	: 0.80mm, 1.00mm, 1.20mm, 1.40mm & 1.60mm
Effective Width	: 1,000mm
Nominal Width	: 1,017mm
Rib Height	: 50mm
Yield Strength	: 276Mpa (CG) & 550Mpa (SG)
Application	: Floor and Roof Decking
Length	: Cut-to-Length up to transportable length

Base Metal Thickness (mm)	Cross Section Area (mm <sup>2</sup> )	Base Metal Weight (kg/m <sup>2</sup> )	Moment of Inertia		Section Modulus	
			Positive Bending (mm <sup>4</sup> )	Negative Bending (mm <sup>4</sup> )	Positive Bending (mm <sup>4</sup> )	Negative Bending (mm <sup>4</sup> )
0.80	976	7.671	385063	272298	14752	8528
1.00	1220	9.589	522226	368358	20673	12000
1.20	1464	11.507	626384	470536	24831	15920
1.40	1708	13.425	721876	578678	28854	20334
1.60	1952	15.343	814595	690984	32239	25210